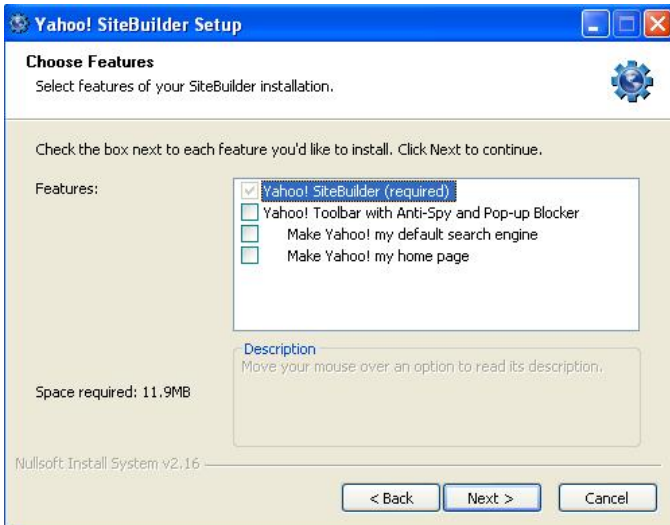
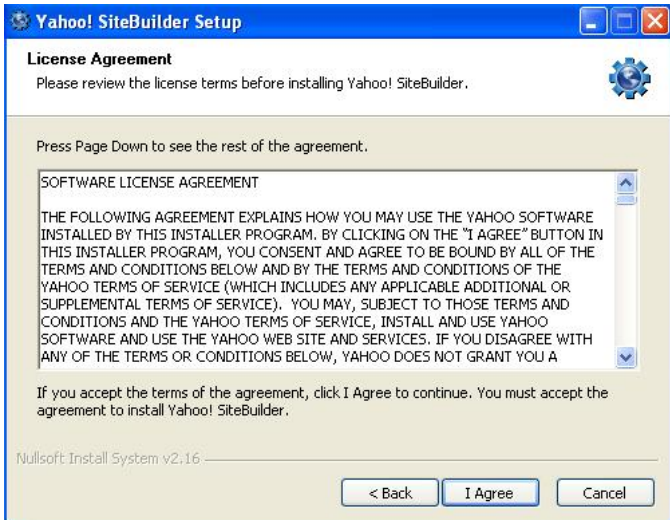
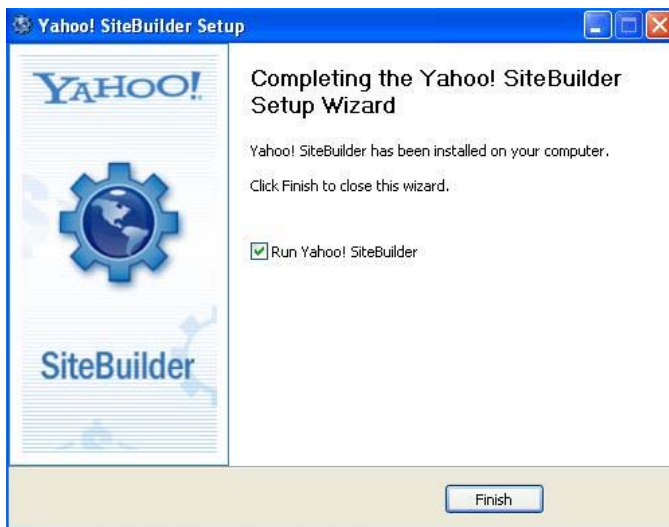
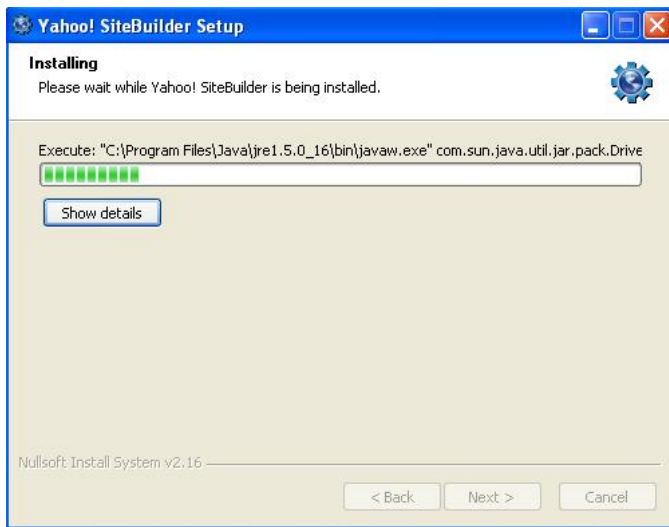
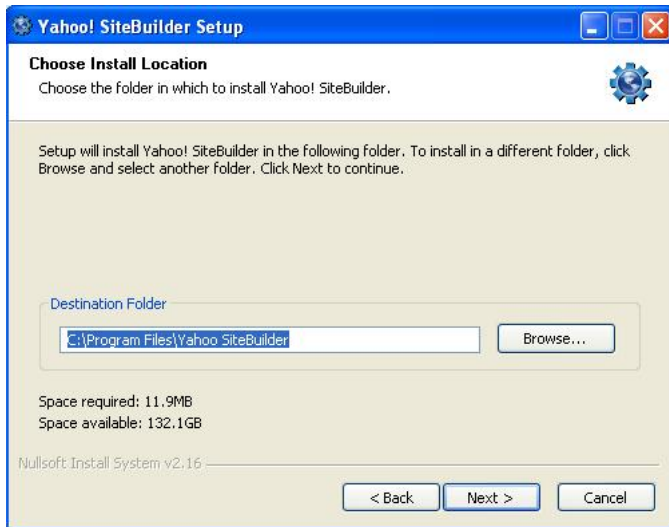


AT&T Pioneers SiteBuilder Software Load/Install Instructions

Load/Install the SiteBuilder (ysitebuilder.exe) Follow the default instructions for installation



AT&T Pioneers SiteBuilder Software Load/Install Instructions



Upon completion, SiteBuilder will open and show some help information

Tutorials – Learning Tools

With **SiteBuilder** Open

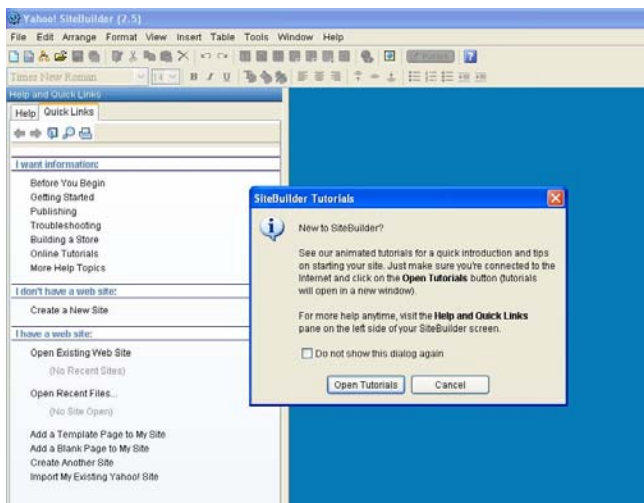
- You will see a Help and Quick Links Help Pane open on the left
- This is where you can find additional help information when needed

You can take the **Online Tutorials** (located in the left Help Pane)

- SiteBuilder Overview
- Adding and Editing Content
- Adding and Editing Links
- Publishing a Site

Help Pane

- You can close the Help Pane by Selecting View in the upper menu bar and uncheck the Show Help Pane or
- Click and hold the blue bar in the center to collapse the Help Pane
- If you need the Help Pane again, Click to expand the blue bar or
- Click the question mark at the top next to the Publish icon



**AT&T Pioneers
SiteBuilder Software Load/Install Instructions**

Cancel when you see this screen



You are now ready to Import the Website

Follow the instructions for *Import the Website* found on the WebMaster Support web page to continue ---

<http://www.attpioneervolunteers.org/Region/WebMasters/WebMasters2.html>