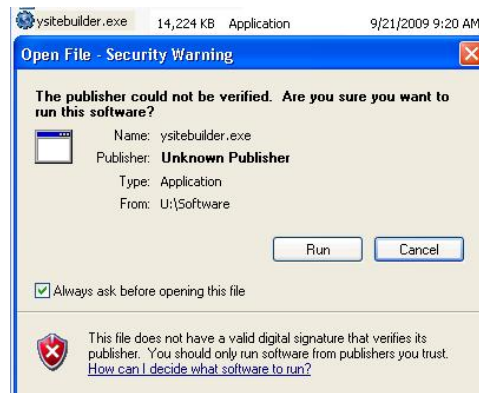


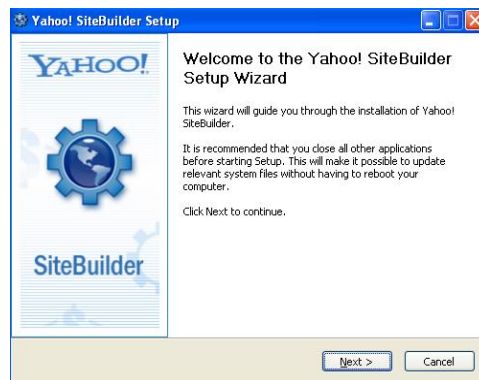
## SiteBuilder Software Loading / Installation Instructions

Now that you have copied the SiteBuilder software to your computer's hard-drive,  
Double-click the **ysitebuilder.exe** file.

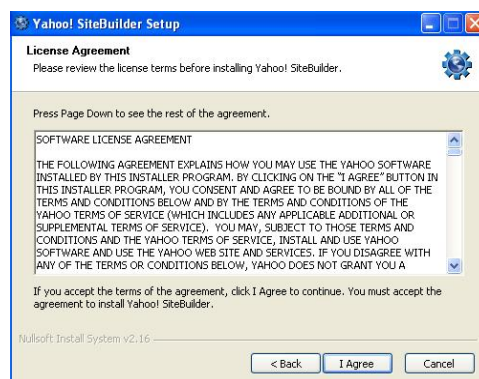


Select **Run**

Follow the default instructions for installation throughout the setup



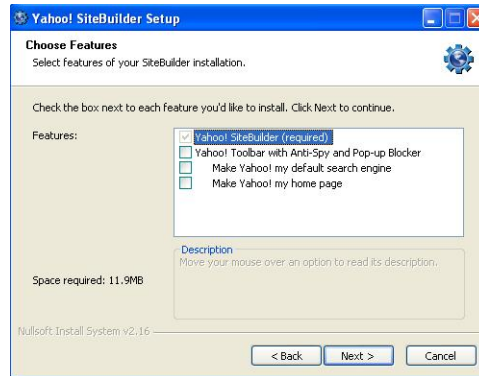
Select **Next >**



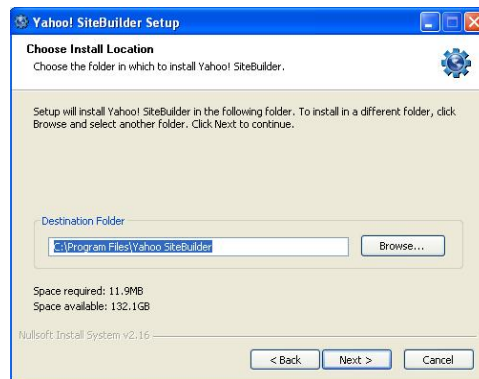
Select **I Agree**

## SiteBuilder Software Loading / Installation Instructions

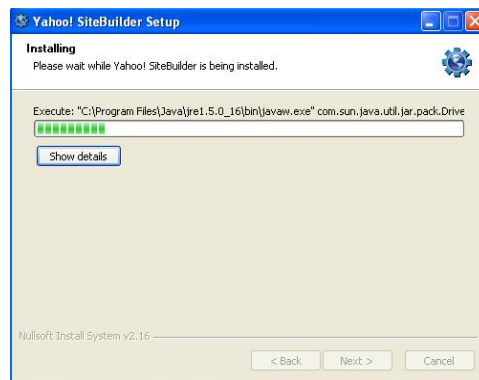
Select **Next** >



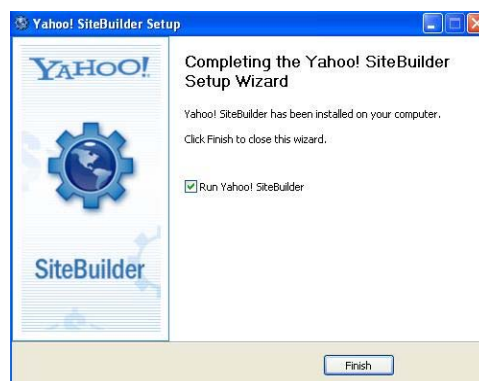
Select **Next** >



Software is installing

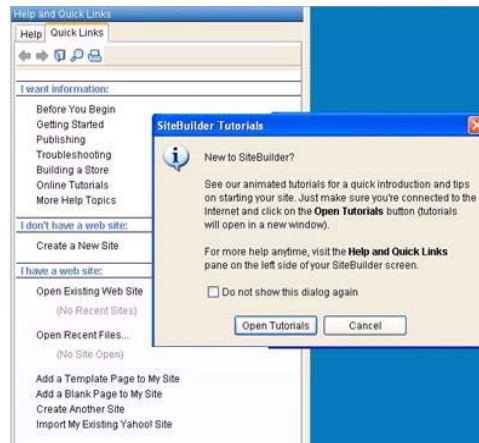


Select **Finish**

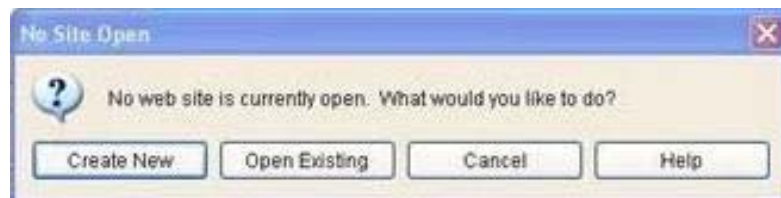


## SiteBuilder Software Loading / Installation Instructions

Upon completion, SiteBuilder will open and you'll see Tutorials and Learning Tools information



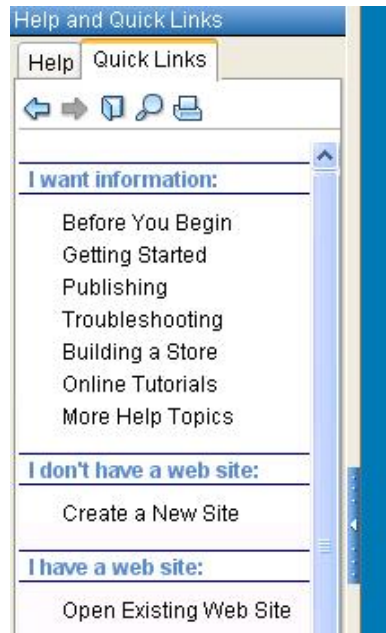
Select **Cancel**



Select **Cancel**

## SiteBuilder Software Loading / Installation Instructions

You will see the Help Pane open where you can find additional help information when needed



### Closing the **Help Pane**

Select **View** in the upper menu bar and uncheck the **Show Help Pane**

Or

Click the blue arrow bar in the center to collapse the Help Pane

### Opening the **Help Pane**

Click the blue arrow bar to expand

Or

Click the question mark at the top next to the Publish icon

Or

Select **View** in the upper menu bar and check the **Show Help Pane**

You are now ready to Import the Website

Follow the **Instructions – Importing the Website** found on the [WebMaster Support](#)

**Thank you!**

